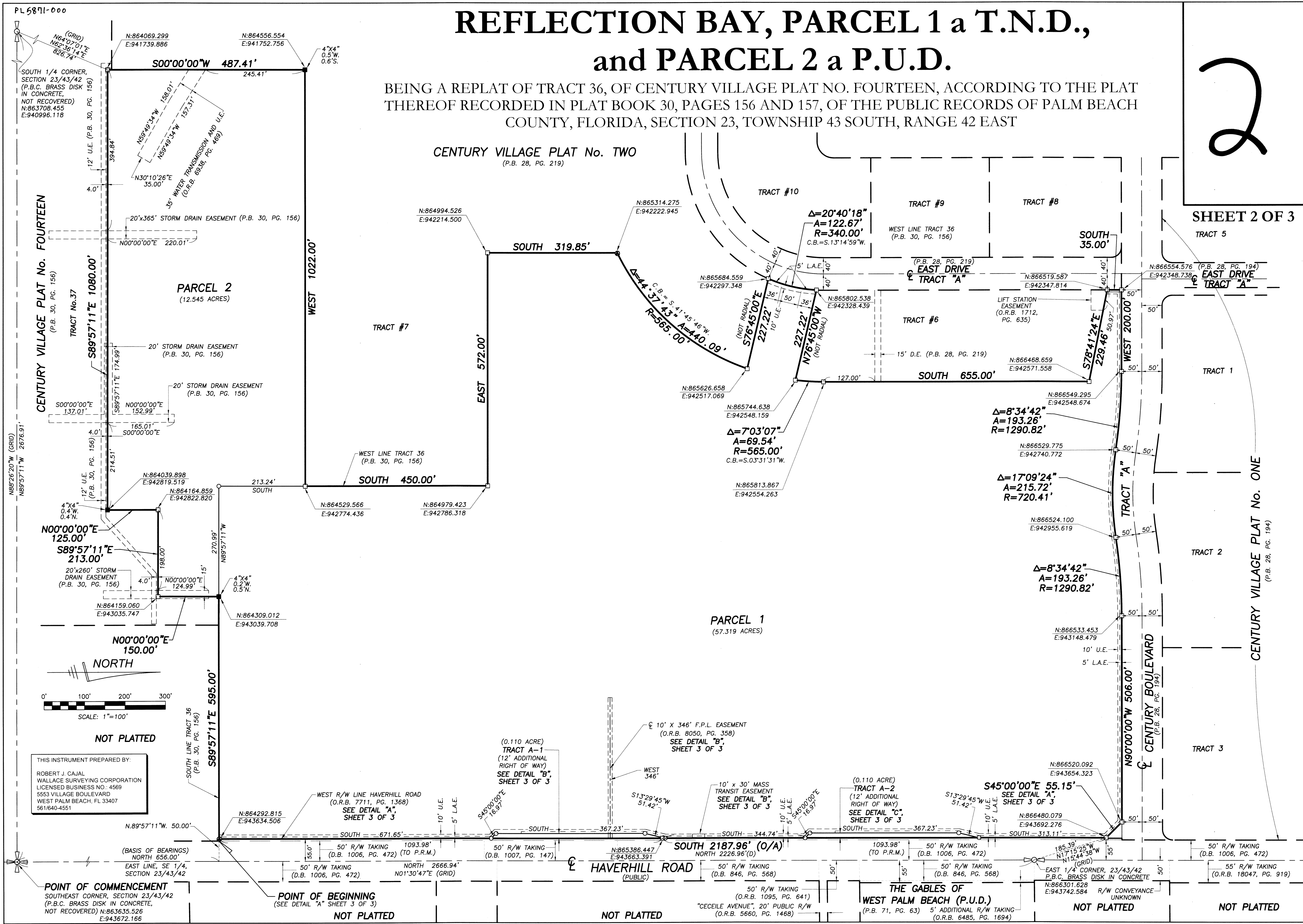


# REFLECTION BAY, PARCEL 1 a T.N.D., and PARCEL 2 a P.U.D.

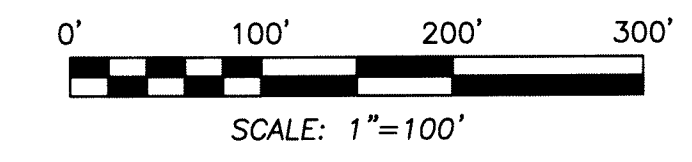
BEING A REPLAT OF TRACT 36, OF CENTURY VILLAGE PLAT NO. FOURTEEN, ACCORDING TO THE PLAT THEREOF RECORDED IN PLAT BOOK 30, PAGES 156 AND 157, OF THE PUBLIC RECORDS OF PALM BEACH COUNTY, FLORIDA, SECTION 23, TOWNSHIP 43 SOUTH, RANGE 42 EAST

2

SHEET 2 OF 3



THIS INSTRUMENT PREPARED BY:  
ROBERT J. CAJAL  
WALLACE SURVEYING CORPORATION  
LICENSED BUSINESS NO.: 4569  
5553 VILLAGE BOULEVARD  
WEST PALM BEACH, FL 33407  
561640-4551



NOT PLATTED

POINT OF COMMENCEMENT  
SOUTHEAST CORNER, SECTION 23/43/42  
(P.B.C. BRASS DISK IN CONCRETE,  
NOT RECOVERED) N:863635.526  
E:943672.166

POINT OF BEGINNING  
(SEE DETAIL "A" SHEET 3 OF 3)  
NOT PLATTED

NOT PLATTED

THE GABLES OF  
WEST PALM BEACH (P.U.D.)  
(P.B. 71, PG. 63) 5' ADDITIONAL R/W TAKING  
(O.R.B. 6485, PG. 1694)

NOT PLATTED

NOT PLATTED